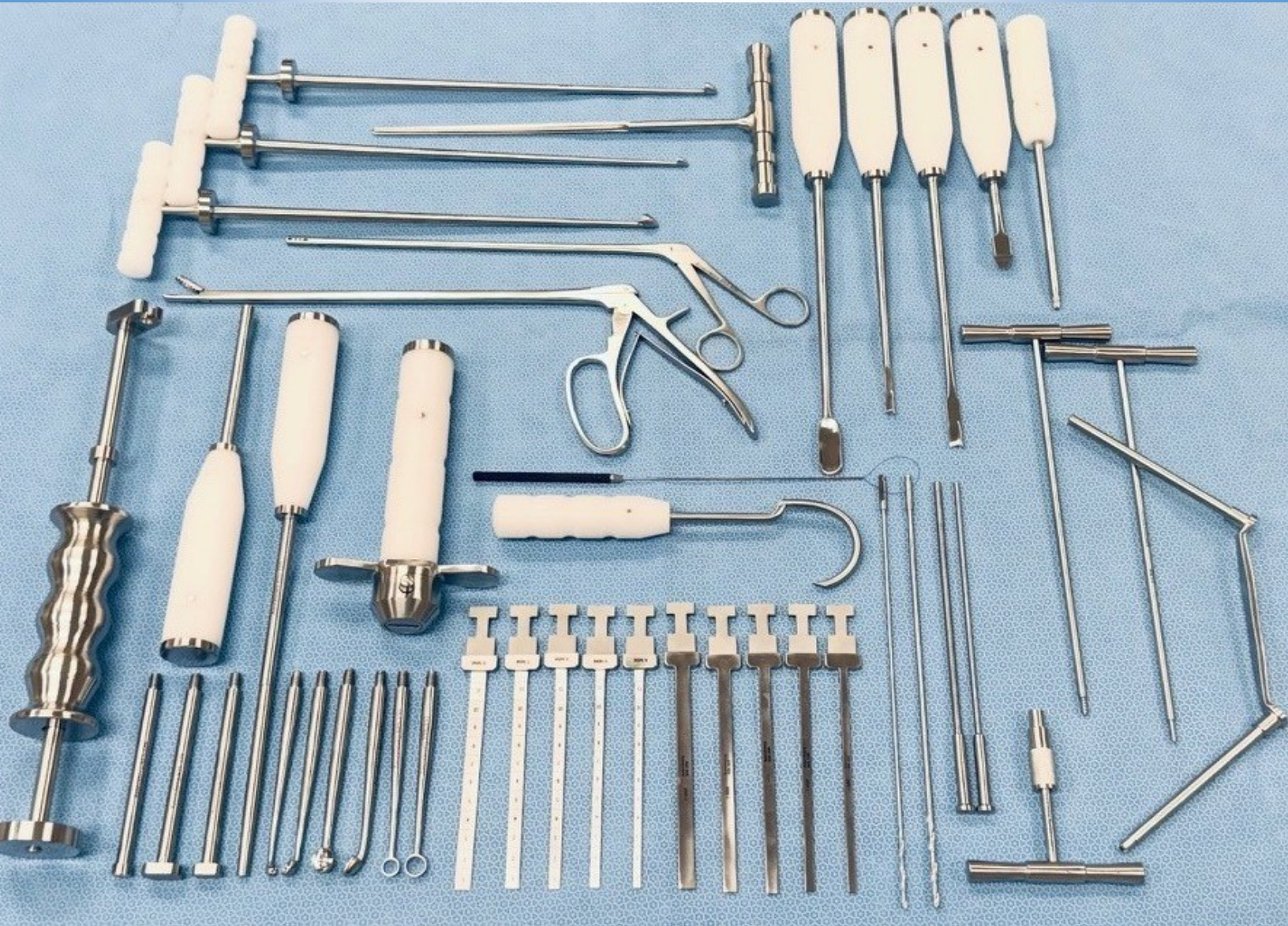
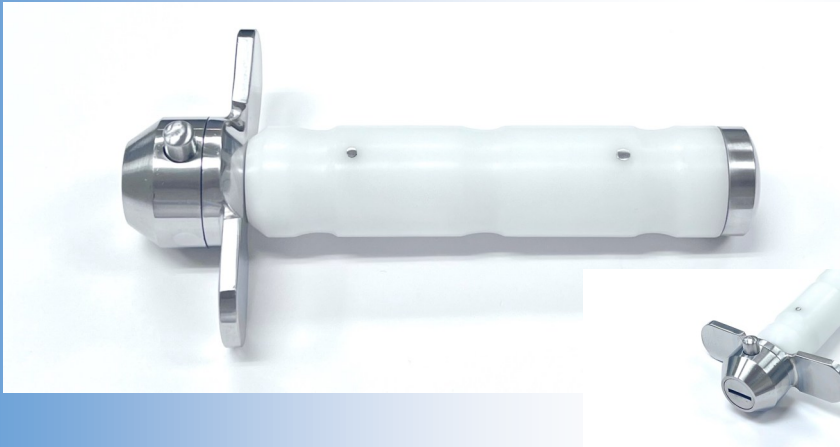


**Product Brochure**



**V.2**

## System Components



**306-200 Flexible Osteotome Handle 7 1/4"**



**306-224 Flexible Osteotome Blade 4x120mm**

**306-225 Flexible Osteotome Blade 5x120mm**

**306-226 Flexible Osteotome Blade 6x120mm**

**306-227 Flexible Osteotome Blade 7x120mm**

**306-208 Flexible Osteotome Blade 8x120mm**



**306-334 Rigid Osteotome Blade 4x120mm**

**306-335 Rigid Osteotome Blade 5x120mm**

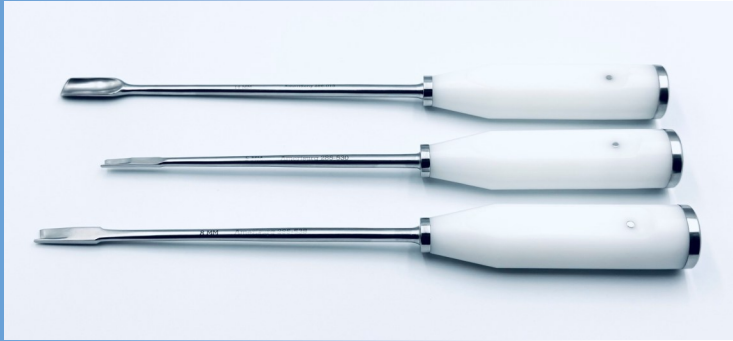
**306-336 Rigid Osteotome Blade 6x120mm**

**306-337 Rigid Osteotome Blade 7x120mm**

**306-338 Rigid Osteotome Blade 8x120mm**



## System Components



**286-015 Moreland Type Cement Gouge 13", 14mm**

**285-530 Moreland Type Cement Splitting Osteotome 12", 5mm**

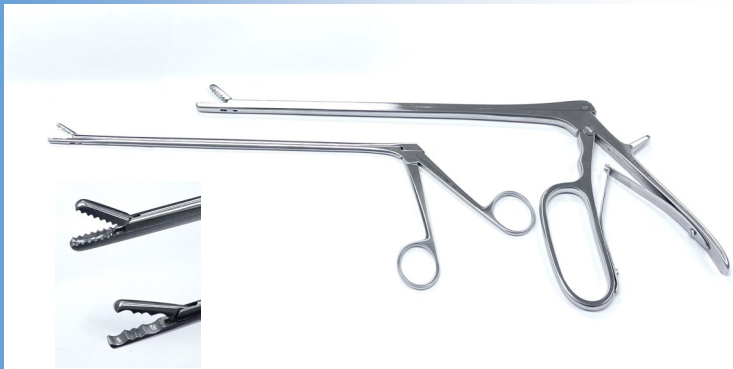
**285-538 Moreland Type Cement Splitting Osteotome 13", 8mm**



**273-504 Retrograde Cement Curette 13", 4mm**

**273-506 Retrograde Cement Curette 13", 6mm**

**273-508 Retrograde Cement Curette 13", 8mm**



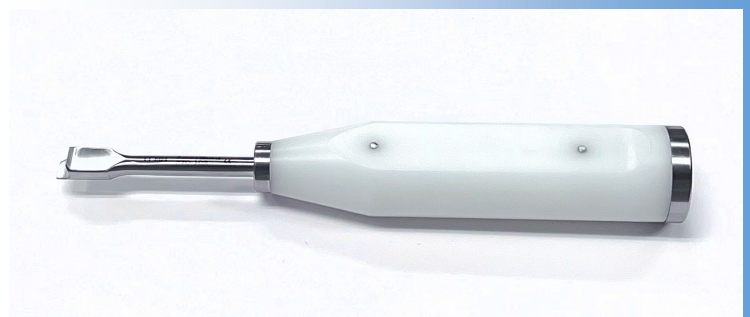
**273-420 Cement Rongeur 13", Heavy Pattern**

**273-400 Cement Rongeur 13", Narrow Pattern**



**385-091 Suture/Wire Passer 8 1/4", 45mm Small Curve**

**825-000 Sterilization Case**



**270-102 Moreland Type Implant Component Extractor 7 3/4", 11mm**

## System Components



- 825-095 Cement Drill Bit 10", 2.5mm AO Quick Connect
- 825-096 Cement Drill Bit 10", 3.5mm AO Quick Connect
- 825-111 T-Handle Cement Tap 10", 3.5mm Treads
- 825-110 T-Handle Cement Reamer 10" 6mm-4mm Taper
- 825-112 T-Handle Cement Tap 10", 4.5mm Threads



- 825-099 Slap-Hammer Disc End 45mm (2ea)
- 825-098 Cement Screw Holder 35x20mm (2ea)
- 825-101 Slap-Hammer Impactor 5", 1.5lbs
- 825-104 Slap-Hammer Rod 13", 10mm Diameter
- 825-108 Cement Plug Screw 8", T25 Head, 3.5mm
- 825-109 Cement Plug Screw 8", T25 Head, 4.5mm



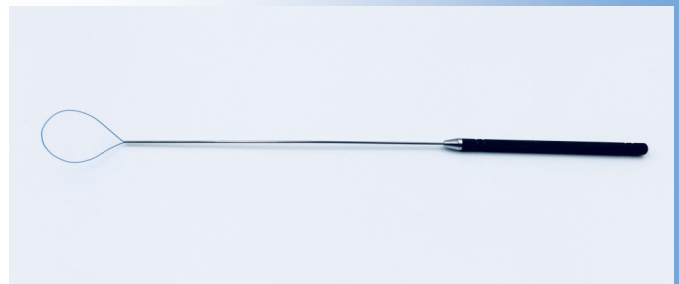
825-094 Drill Sleeve 6", 2.5mm and 3.5mm



825-135 T-Handle Driver, AO Quick Connect



825-129 T25 Screwdriver 9"



133-151 Suture/Tape Retriever 9", Nitinol Sleeve

**Modular Head Curette and Tamp Set**



**825-120 Modular Handles (2ea) 9 1/4"**

**825-121 Curette 4", 4x6mm, Straight**

**825-122 Curette 4", 6x8mm, Forward Angle**

**825-123 Curette 4", 8x10mm, Forward Angle**

**825-124 Curette 4", 10x12mm, Straight**

**825-130 Ring Curette 4", 7mm**

**825-125 Bone Tamp 4", 6mm, Round**

**825-126 Bone Tamp 4", 10mm, Round**

**825-127 Bone Tamp 4", 10x15mm**

**825-128 Bone Tamp 4", 15x20mm**

**825-131 Ring Curette 4", 9mm**



